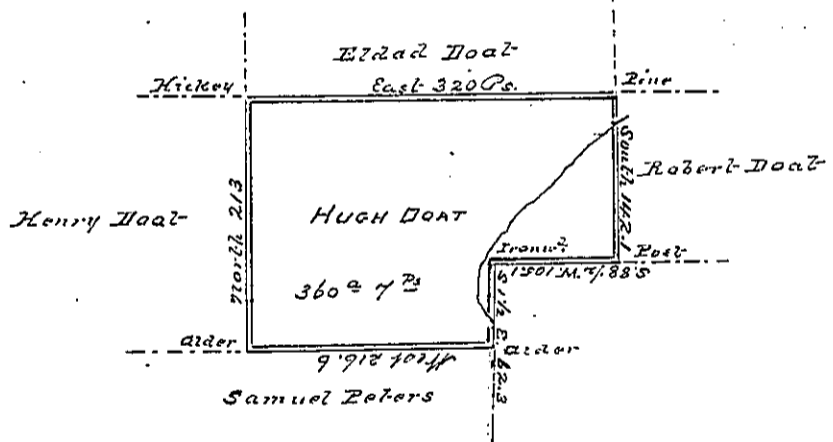


Situate on the East side of French Creek in Allegheny County. Containing 401 a. 150 p. and allowance of Six p. cent for Roads &c. Surveyed the 16th day of ~~the~~ June 1794 In pursuance of a Warrant dated the 10th day of April 1793.

Wm. Power D. S.

To Daniel Brodhead Esq. }
Surveyor General

see another below



Situate on the waters of little Sugar Creek in Allegheny County. Containing 360 acres of perches and allowance of Six p. cent for Roads &c. Surveyed the 25 May 1798 In pursuance of a Warrant granted to Hugh Doat dated the 10th April 1793 and an Order of re-survey from the board of Property of Pennsylvania dated the 20th April 1798 To now Crawford County

John Power D. S.

Daniel Brodhead Esquire Surveyor General.

IN TESTIMONY that the above is a copy of the original remaining on file in the Department of Internal Affairs of Pennsylvania, made conformably to an Act of Assembly approved the 16th day of February, 1833, I have hereunto set my Hand and caused the Seal of said Department to be affixed at Harrisburg, this

Twenty-eighth day of November 1837.

Wm. Stewart
Secretary of Internal Affairs